

制动  
系统



\* 产品技术参数根据实际应用略有差异

## 制动角模块总成

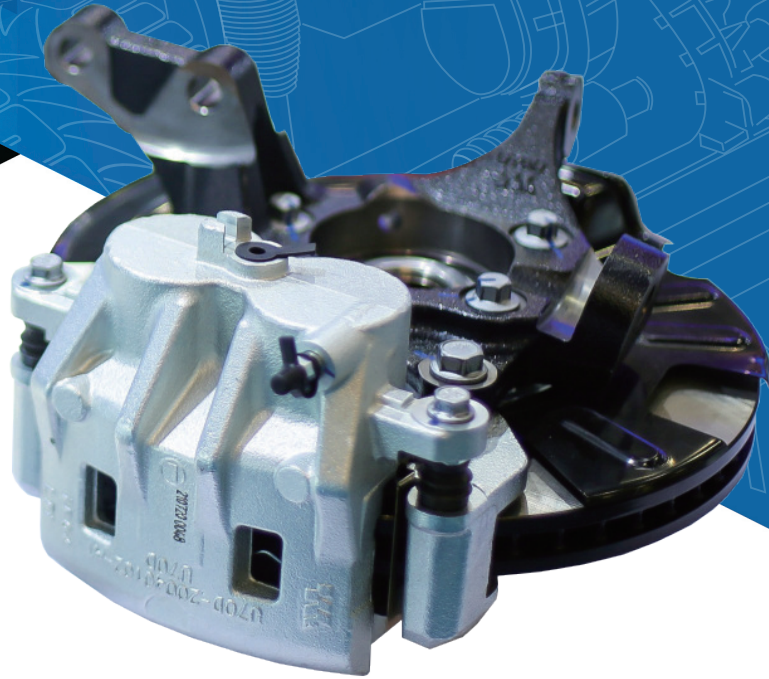
### 特性

- 制动噪音达A级标准
- 拖滞力矩小于1.5N.m
- 总成跳动不大于0.05毫米
- 钳体钢性高，需液量小，同级最优
- 单双缸齐全，缸径尺寸为直径34至60毫米

参数	
活塞缸径 [mm]	φ36至φ60
拖滞力矩 [Nm]	<1.5
钳体刚性	<0.15mm@7MPa
活塞启动压力 [Mpa]	<0.15
钳体滑动阻力 [N]	<95
总成跳动[mm]	<0.05



## Brake System



# Brake Corner Module

## Features

- Noise to meet the A standard
- Drag torque lower than 1.5 Nm
- The assembly runout shall not be greater than 0.05mm
- Smaller brake fluid amount with higher rigidity caliper housing
- Optional single / double cylinders. Diameter sizes from 36mm to 60mm

## Parameters

Piston Diameter [mm]	φ36 - φ60
Drag Torque [Nm]	<1.5
Caliper Stiffness	<0.15mm@7MPa
Piston Starting Pressure [Mpa]	<0.15
Caliper Sliding Resistance [N]	<95
The Assembly Runout[mm]	<0.05

